

*"We can handle..."*

**AMSteel**  
Port & Steel Operations



**AMSTEEL OPERATION REPORT**

# MV REEM - O Operational Report

## M/V REEM - O loaded successfully

---

- **Vessel Name** : MV Reem- O
- **Cargo** : General Cargo
- **Quantity** : 450 Pieces / 2,044.003 Ton
- **Operation Start** : 1040 10<sup>th</sup> of July 2018
- **Operation Finish** : 0815 12<sup>th</sup> of July 2018
- **Vessel Berthing** : 2130 07<sup>th</sup> of July 2018
- **Vessel Sailing** : 1420 12<sup>th</sup> of July 2018
- **Equipment Used** : 1 LHM 550 Mobile Harbor Crane
- **Idle Duration** : Total 9 Hours 35 Minutes
  - Hatch Replacing : 2 Hours 15 Minutes
  - Midday Work Band : 6 Hours
  - Hold Plan Waiting : 1 Hours 20 Minutes
- **Hours Operated** : 45 Hours 35 Minutes
- **Net operation** : 36 Hours
- **Actual Performance** : 9.9 Pieces Per Hour / 237 Pieces Per Day
- **Theoretical Performance** : 12.5 Pieces Per Hour / 300 Pieces Per Day
- **Crane Productivity** : % 79

**AMSTEEL handled very successfully**

# MV REEM - O Operational Report

## Operational Preparation



**AMSTEEL handled very successfully**



# MV REEM - O Operational Report

## Cargo Storing in KAP



**AMSTEEL handled very successfully**

# MV REEM - O Operational Report

## Vessel Berthing

---



**AMSTEEL handled very successfully**



# MV REEM - O Operational Report

## Export Operation



**AMSTEEL handled very successfully**

# MV REEM - O Operational Report

## Export Operation

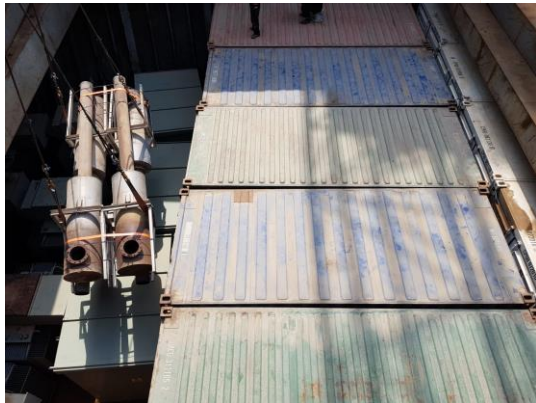
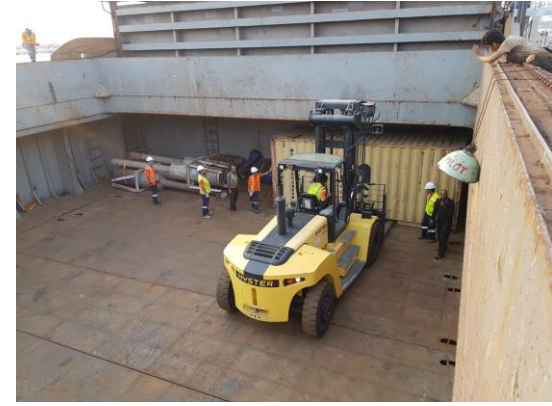


**AMSTEEL handled very successfully**



# MV REEM - O Operational Report

## Equipment is Inside

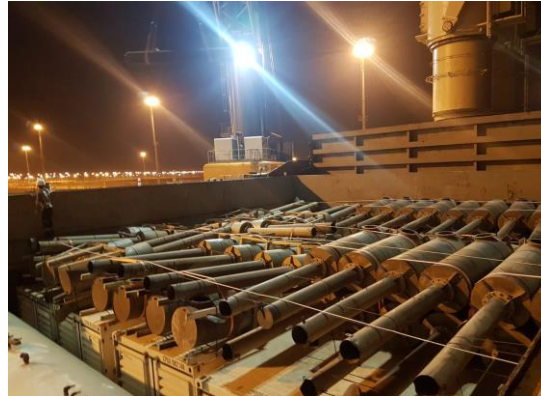


**AMSTEEL handled very successfully**



# MV REEM - O Operational Report

## Lashing Operation



**AMSTEEL handled very successfully**

# MV REEM - O Operational Report

## Operation Completed

---



**MV REEM - O loaded very successfully**



# Thank You

[Info@amsteel.com](mailto:Info@amsteel.com)

[Sales@amsteel.com](mailto:Sales@amsteel.com)